
LS1S High Speed Hands-in Hand Dryer



Surface Mounted High Speed Hand Dryer

Index

03	Technical Data
04	General Safety Information
05	Installation
06	Recommended Mounting Heights
06	Operation
07	Cleaning and Maintenance Instructions
08	Diagram
09	Parts List

Technical Data



Item Category	Performance Data
Operating Voltage	220 - 240Vac, 50 Hz, 850 WATTS
Warm Air Speed Output	95 m/s (220m³/h)
Display	LCD instructions and countdown
Motor Type	18,000 rpm, ICP Brushless DC
Motor Thermal Protection	Auto Resetting Thermostat turns unit off, 240V at 221°F (105°C) - EURO Spec
Heater Element	Not Applicable
Heater Thermal Protection	Not Applicable
Drying Time	Under 10 seconds
Circuit Operation	Infrared Automatic, self adjusting
Timing Protection	30 seconds auto shut off
Drip Proof	IP22
Isolation	CLASS I
Decebel Rating	78 dba@ 1 mtr
Net Weight	11 kg
Shipping Weight	13 kg
Unit Size	292mm W x 650mm H x 250mm D

Item Code	Cover Type/Finish
LS1S	ABS Metallic silver

General Safety Information

Warning

This product is intended for installation by a qualified service person.
Use AWAG No.16 solid conductor for wiring.

Failure to properly ground unit could result in electrical shock and/or death.

Disconnect power at the service breaker before installing or servicing.

NOT FOR HOUSEHOLD USE - MAY CAUSE BURNS
“IMPROPRE A L’USAGE DOMESTIQUE - PUET OCCASIONNER.”

All units must be supplied with a 2-wire service. The ground wire must be connected with the dryers back plate.

NOTE: Do not install dryer over wash basin.

Type Y attachment

If the power supply cord is damaged, it must be replaced by the manufacturer or its service agent or a similar qualified person in order to avoid a hazard.

Means for disconnection must be incorporated in the fixed wiring in accordance with the wiring rules.

Installation

Installation

Installation must be carried out only by a qualified electrician

1. Make sure power supply breaker is switched off. Installation must be carried out in accordance with the current edition of the local wiring regulations code having jurisdiction. Installation should be performed only by a qualified electrician.
2. Place template against wall at desired height (see mounting height recommendations) and mark locations of 4 mounting holes and wire service entry at knockout (KO) location.

NOTE: For two or more dryers, dryers should be no closer than 24 inches (610 mm) on centre.

3. Remove and retain 2 cover screws.
4. Connect supply wires to terminal block where indicated and connect ground wire to baseplate with ground screw.

Connections:

- a. Connect the live wire (coloured red or brown) to the terminal block marked "L".
- b. Connect the neutral wire (coloured black or blue) to the terminal block marked "N".

Note that the colour of live and neutral wires depends on voltage of supply service.

5. Replace cover screens. Do not over-tighten.

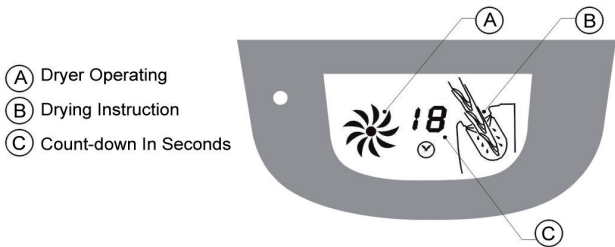
Recommended Mounting Heights

From floor to bottom of dryer.

Men's	Ladies	Children, ages 11-17	Children, ages 3-10	Disabled
13"	11"	10"	6"	4"
350 mm	300 mm	250 mm	150 mm	100 mm

Operation

- No touch operation.
- Shake excess water from hands.
- Place hands onto the aperture.
- Move hands up and down (as per CPU instruction).
- Stops automatically after hands are removed.



Cleaning and Maintenance Instructions

Cleaning and Maintenance Instructions

Periodic cleaning of the unit is recommended to ensure optimum performance.

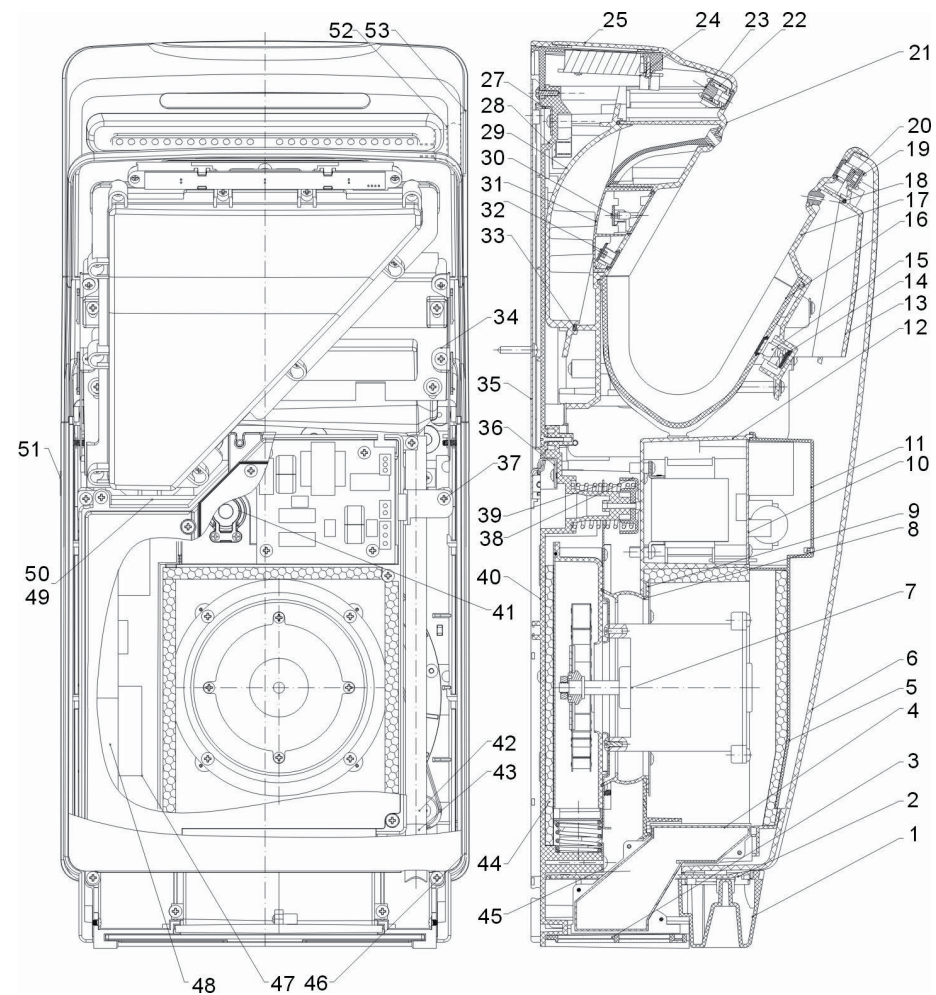
- Switch to service mode located on the top right side of the dryer.
- Wipe the cover with a soft cloth and a mild cleaning solution. Do not Soak. Never use abrasives to clean the cover.

Warning

- Never spray water directly onto hand dryer
- Never use any abrasives or harsh chemicals
- Turn off electricity prior to cleaning the hand dryer



Diagram



Parts List

Parts List

Key	Description	Key	Description
1	Water tank	29	Back air cover
2	Cover	30	Circuitry G
3	Filter	31	Light box
4	Air inlet	32	Circuitry H
5	Motor cover	33	Back airproof
6	Front cover	34	Connected board B
7	Motor and air home	35	Fixing board
8	Sound insulation cover	36	Small pothook
9	Fixer	37	Plus screw
10	Circuitry A	38	Spring
11	Connection converter	39	Spring fixed cover
12	motor cover	40	Main body
13	Front air out cover	41	Mica board
14	Circuitry C	42	Hose
15	Bracket	43	Outlet rubber
16	Connector	44	Celotex A
17	Front air shell	45	Block Spring
18	Front airproof	46	Sideboard
19	Circuitry D	47	Circuitry box
20	Plus screw	48	Circuitry B
21	Back screen	49	Fix loop
22	Bracket	50	Air connector
23	Circuitry E	51	Nut
24	Circuitry F	52	Switch
25	LCD dashboard	53	Switch button
27	Bis pothook		
28	Back board		

